





### AUTOMATIC NET WEIGHT LIQUID FILLING MACHINES - AE SERIES



#### CONTAINER SIZE

Small Containers		
1/2 Pint		Pails
Pints		Kegs
Quarts	•	Drums
Gallons	•	Totes

#### INDUSTRIES SERVED

Paints & Coatings	
Chemicals	
Lubricants	
Food & Beverage	

## AUTOMATIC TOTE FILLER

#### PRODUCT OVERVIEW:

The Ideal-Pak Automatic Electronic Series of Liquid Filling Machines delivers the highest levels of automation and precision filling in a full-featured package. Increase production and throughput with Ideal-Pak's electronic net-weight fill system technology, SPC, PLC control, touch screen HMI with recipe storage, and SPC with check-weigh data logging and single or multiple filling positions.

#### STANDARD PRODUCT FEATURES AND BENEFITS

- Electronic Net Weight Filling Operation with SPC delivers higher accuracy and greater throughput
- PLC-Controlled System provides hands-free automatic filling
- Choice of Top Fill or Bottom Fill Operation flexibility easily handles Non-Foamy and Foamy product applications
- Large Color Touch Screen Panel (HMI) enables fast and efficient machine set-up
- Recipe Generation Software to easily create, store and select product recipes for fast product changeover
- Password Protected Operator, Maintenance and Engineering Screens increases security for production operation
- Wide Choice of Wetted Parts increases functionality over a broad range of unique product characteristics

#### ABOUT IDEAL-PAK

Ideal-Pak Liquid Filling Machines are designed to increase your yields, productivity and efficiency. Choose from Automatic to Semi-Automatic or Manual Configurations to fill small containers up to drums and totes. Ideal-Pak customers are in the paint and coatings, lubricants, chemicals and food & beverage industries.

Choose Ideal-Pak for a wide variety of closing machines, lid placers and precision nozzles, plus parts and service.

May be covered by one or more of the following U.S. Patents: #5,505,233, #5,823,406, #6,148,877, #6,595,250



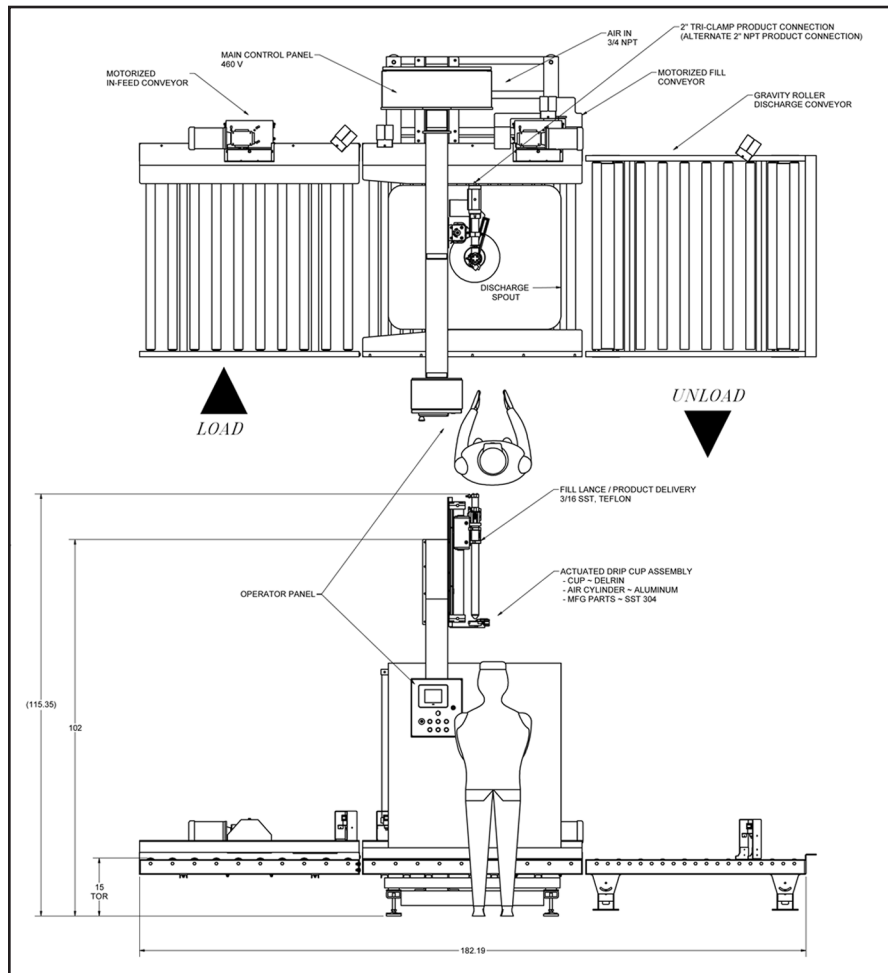
## Automatic Electronic Net Weight Liquid Filling Machine

MACHINE SPECIFICATIONS	
Electrical	120 VAC, single phase, 60 Hz
Air (per head)	5 SCFM @ 80 PSI (Clean Dry Air)
Container Size	Tote Bins and Drums
Speed*	Totes: Consult Factory Drums: 1-3 Minutes per Drum
Accuracy: To Within $\pm 1.0$ lbs	
*Fill rates will vary depending on container size, container shape, fill opening, accuracy required, product supply, as well as individual product characteristics and operation mode.	
**Accuracy will vary with the capacity of the scale	

Subject to changes and modifications without notice.



Optional Fume Hooded Enclosure Shown



### OPTIONS

- CIP on Fill Lance and Adapter with Clamp for CIP
- Drip Cup
- Explosion Proof Package
- Fill Lance
- Fume Vent
- Ground Interlock
- Nitrogen Purge through the Nozzle
- On-scale Conveyor
- Operator Platform
- Pneumatic wrench for bung removal and attachment
- Pump Control
- Sanitary Product Delivery
- Top Fill or Bottom Fill Machine Configuration
- Choose from Various in-feed & out feed conveyor configurations

May be covered by one or more of the following U.S. Patents: #5,505,233, #5,823,406, #6,148,877, #6,595,250

PT-IF-AUTO; PT-BF-AUTO 3-2015

