

### AUTOMATIC NET WEIGHT LIQUID FILLING MACHINES - AE SERIES

#### NET WEIGHT FILLING MACHINE FOR FILLING 1 GALLON, 2 GALLON AND 5 GALLON CONTAINERS



Four Head Automatic Net Weight Liquid Filling Machine with Lateral Transfer and DFS® Direct Fill System.

#### PRODUCT OVERVIEW

The Ideal-Pak **PREMIER** Line delivers the highest of levels of automation & precision filling performance in a full-featured package. Improve productivity with automatic PLC-controlled filling, lid placement, lid closing and conveyor systems for hands-free operation.

#### STANDARD PRODUCT FEATURES

- Electronic Net Weight Filling – In 1, 2, 3, 4, 6 or 8 Head Filling Station Configurations.
- Allen-Bradley PLC.
- Auto Preact.
- Check Weigher at Fill Stations.
- Container Counter.
- Fast Fill Recipe Development & Convenient Fill Recipe Storage.
- Fills Gallons to 5 Gallons.
- Choose Heavy Duty Roller Closer, Crimper Closer or Rieke Press.
- Lb/Kg Weight Units Toggle.
- Large Color Touch Screen HMI with Recipe Storage & Ethernet Connectivity.
- Lb/Kg Weight Units Toggle.
- Machine Diagnostics.
- Patented Flush-Fill Cart System.
- Patented Interchangeable Fill Cart (Ideal-Pak DFS® Direct Fill System or Manifold Fill Cart).
- Permanent Lubrication.
- Preventative Maintenance Alert.
- Rigid Steel Frame Construction.

May be covered by one or more of the following U.S. Patents: #5,505,233, #5,823,406, #6,148,877, #6,595,250

#### CONTAINER SIZE

Small Containers	
1/2 Pint	• Pails
Pints	Kegs
Quarts	Drums
• Gallons	Totes

#### INDUSTRIES SERVED

Paints & Coatings	
Chemicals	
Lubricants	
Food & Beverage	

#### ABOUT IDEAL-PAK

Ideal-Pak Liquid Filling Machines are designed to increase your yields, productivity and efficiency. Choose from Automatic to Semi-Automatic or Manual Configurations to fill small containers up to drums and totes. Ideal-Pak customers are in the paint and coatings, lubricants, chemicals and food & beverage industries.

Ideal-Pak is also your first source for a wide variety of closing machines, lid placers and precision nozzles, plus parts and service, (including Neupak).



**AUTOMATIC NET WEIGHT LIQUID FILLING MACHINES - AE SERIES**

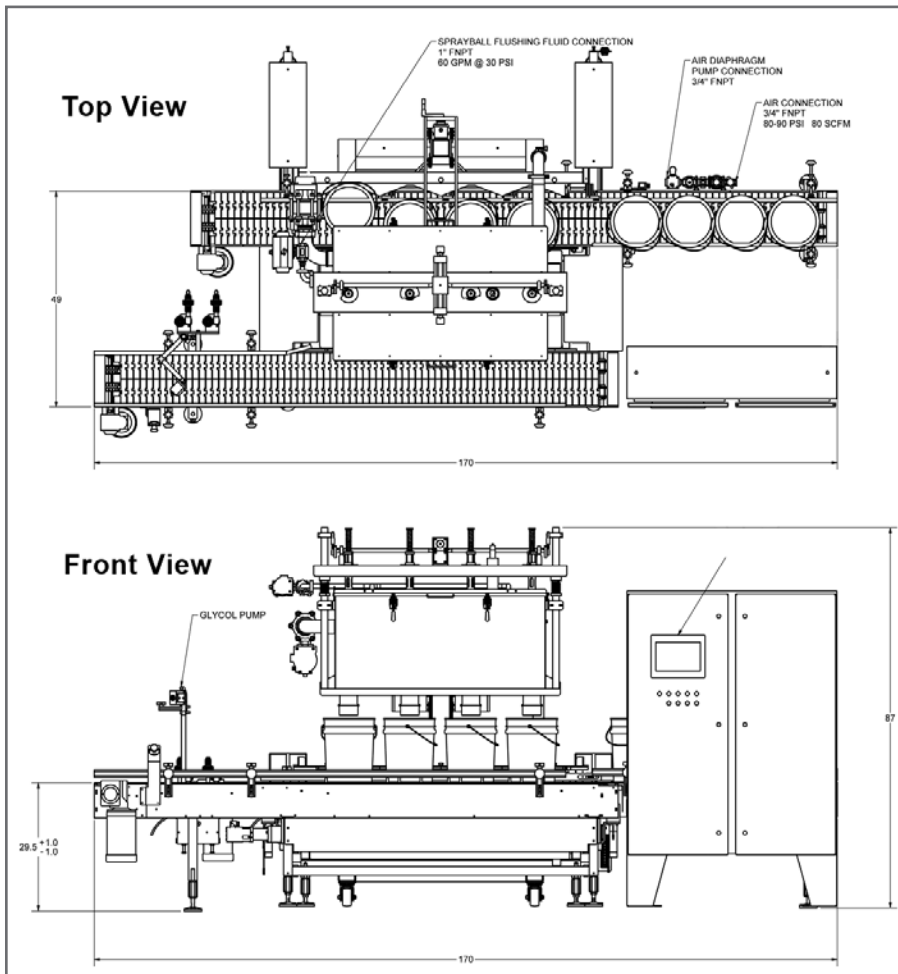
MACHINE SPECIFICATIONS	
Electrical	460 VAC, 3Ø, 60 Hz
Air (per head)	80 SCFM @ 80 - 90 PSI (Clean Dry Air) with pump
Speed (CPM)	4 Head
1 Gallon Open Top	15 - 26
2 Gallon Open Top	13 - 24
5 Gallon Open Top	12 - 16
Accuracy: To Within ± .1 lbs	
*Estimated average range. Fill rates will vary depending on container size, container shape, fill opening, accuracy required, product supply, as well as individual product characteristics and operation mode.	

**OPTIONS**



Ideal-Pak Flush Trough for Remote Fill Cart Cleaning.

- Additional Mobile Filling Carts.
- Explosion Proof Machine Upgrade Class 1, Div 1.
- Glycol Pumps.
- Hand Capper (pneumatic).
- Ideal Pak Exclusive Direct Fill System DFS®.
- In-feed & Exit Conveyors, Gravity Roller or Powered).
- Lid Placers.
- Nitrogen Purge Controls.
- Pump Controls.
- Roller Closers, Crimper Closers or Press Plate (burper) Closers.
- Rotary In-Feed or Accumulation Tables.
- Sanitary Contact Parts.
- Spare Parts Kits.
- Top Fill, Inside Fill or Bottom Up Filling.
- Various Nozzle Configurations; Cone, Plug, Probe & Shower.
- Zinc Plated Carbon Steel, Stainless Steel or Epoxy Coated Paint Frame.



Subject to changes and modifications without notice.  
May be covered by one or more of the following U.S. Patents: #5,505,233, #5,823,406, #6,148,877, #6,595,250

AE4-LNM 3-2015

